



center for behavioral &  
addiction medicine

# ANNUAL REPORT

July 2022 - June 2023



## A Word from our Executive Director, Steve Shoptaw, PhD



This next year at CBAM, you can bet that we will lead the science at the intersection of addiction medicine and infectious diseases. That level of excellence and impact is what we've come to expect from ourselves. We are pushing growth in two new areas. The first is education and training. We are going to host a number of new "learners" from different programs:

- Discovery Year Students. Medical students in their third year "Discovery Year" now conduct a capstone project in a 9-month curriculum. We'll be teaching 11 students who have chosen to do their Discovery Year with our Department of Family Medicine.
- Professional Development Group. This group is led by Drs. Clark and Shoptaw and attended by investigators doing clinical research and those providing addiction medicine services in the setting of HIV.
- Fridays with Fellows. An advanced course in the UCLA Department of Family Medicine's Addiction Medicine Fellowship that is led by Dr. Shoptaw and held biweekly.
- Case-based Learning Collaborative on Stimulants. This new series, launching in October 2023, will use a case-based learning approach to share experiences, educate, and disseminate the latest evidence-based data on the use of medication and other therapies for treating stimulant use disorders. The series is targeted towards physicians, nurses, physician associates, social workers, recovery specialists, community health workers, and others interested in improving the care of persons with stimulant use disorders.

With all of the increase in activities in teaching, in clinical research, and in providing a limited set of addiction medicine services, the need for more space is going to be even more critical. You may have over-heard discussions recognizing the importance of finding a larger space that can accommodate all of our staff and programs. Jennifer Baughman is leading this effort and already has a couple of options for us to consider.

I can assure all of us that the state of CBAM and the UCLA Vine Street Clinic is strong. We have an exciting year ahead of us. Thanks to all who join together to reach these impressive goals. I'm honored to let everyone know for sure what they already suspect: CBAM is a national leader in research at the intersection of infectious diseases and addiction medicine. And that is something worth crowing about.



## A Word from our Medical Director, Jesse Clark, MD



Every year, when asked to reflect back on the previous 12 months, I am struck by two competing thoughts: 1) "What just happened?" and 2) "Did we really do all that?" As a way of addressing both of these questions at the same time, I am happy to share with you all our year in review.

CBAM and UCLA Vine Street Clinic (UVSC) continue as leaders in the field of substance use research, specifically in advancing understanding of methamphetamine (MA) use and its complications. Our team has played a central role in several studies seeking to assess the safety of new pharmacologic treatments for methamphetamine use disorder (MUD), to evaluate the effectiveness of new pharmacologic treatments to control use of cocaine, methamphetamine and

opiates, and to characterize the different "phenotypes" of opiate users in order to better tailor individual treatment strategies. These studies, which are in varying stages of completion, offer the promise of new medications to help people safely and effectively stop or reduce their use of substances which remains a central part of the CBAM mission.

In the field of HIV prevention, we have both led and contributed to a range of clinical trials testing mRNA-based HIV vaccines and long-acting medications for HIV pre-exposure prophylaxis, or PrEP. Coming off of our success in the trial of Moderna's COVID-19 vaccine, we worked with the HIV Vaccine Trials Network (HVTN) leading a Phase I safety study of a new vaccine based on similar mRNA technology. We are also working with Gilead and the HIV Prevention Trials Network (HPTN) on long-acting injectable agents for HIV PrEP, including Cabotegravir and Lenacapavir, both of which offer the possibility of preventing HIV with an injection that can be given as infrequently as every 6 months. Thanks to the work of our outstanding research team, UVSC remains a consistent overperformer in recruitment and retention of participants from the racial, ethnic, gender and sexual minorities most affected by the HIV epidemic, allowing us to give back to our local community by including them in these cutting-edge trials of new prevention and treatment strategies.

A cornerstone of our work in bringing together substance use and HIV prevention remains the HPTN INTEGRA trial, directed by Dr. Shoptaw, which provides community-based services for HIV prevention and treatment and opiate use disorder. Expected to finish enrollment September 2023, our dedicated staff has made a tremendous difference in bringing high quality of healthcare and social services directly to the places where people live. We also built on the CMax trial that used Contingency Management (CM) to link substance use harm reduction with HIV prevention, writing new proposals for future studies to develop and expand the reach of that successful pilot study. In addition, work by young investigators Michael Li, PhD, MPH, and Cherie Blair, MD, PhD uses CM as a tool to control MA use and assess the effect of methamphetamine on HIV infection, inflammation, and psychosocial stress. As a result, our team's both expands the reach and defines the parameters of joint HIV prevention-substance use harm reduction.

Along with Drs. Blair and Li, we have continued to grow our family by welcoming new research staff, promoting our existing staff to new leadership roles and responsibilities, and encouraging the development of new investigators. Our successful open house in December, 2022 allowed us to emerge from the semi-isolation of the pandemic to share the broad range of our work with colleagues and participants, and to re-establish our presence in the local community. Outside of UVSC, I was recently awarded a T32 training grant from the National Institutes of Mental Health (NIMH) to support post-doctoral training in global HIV prevention and treatment research, and continue to lead the South American Program in HIV Prevention Research, mentoring medical students and residents from the U.S. in the principles of HIV prevention in Latin America. Extending the disciplinary and geographic reach of the CBAM, these programs will help us train the next generation of researchers while also redefining the scope of our work to address HIV and substance use in minority communities worldwide.

## Research Highlights



In pursuit of our mission, CBAM conducts research on medical, behavioral, and combination approaches to the prevention and treatment of chronic illnesses, with a particular focus on addiction and HIV. We stress the values of integrity and scientific rigor in the conduct of our research and work closely with the communities we serve to ensure that the best of care is given. The following pages highlight our research activities over the past year.



## New Studies

The Clinical Trials Network (CTN) of the National Institute on Drug Abuse (NIDA) provides a framework under which NIDA, treatment researchers, and community-based service providers work toward new treatment options for a variety of substance use disorders. CBAM's Dr. Steve Shoptaw serves as Co-Principal Investigator of the Big Southwest Node of the CTN and national lead and co-lead respectively on the two new, multi-site clinical trials described below:



### CTN-0110: Randomized, Double-Blind, Placebo-Controlled Trial of Monthly Injectable Buprenorphine for Methamphetamine Use Disorder (MURB)

Recent years have seen an increase polysubstance use and a rise in the incidence of overdose deaths due to use of opioids with methamphetamine. There are no FDA-approved medications to treat methamphetamine use disorder. This study tests the use of long-acting buprenorphine versus placebo as a treatment for methamphetamine use disorder among persons who co-use opioids. The UCLA Vine Street Clinic serves as a site for this study which began enrolling in Spring 2023 under the local direction of Dr. Timothy Hall.

### CTN 0109: Randomized, Placebo-Controlled Trial of Injectable Naltrexone and Monthly Injectable Buprenorphine for Cocaine Use Disorder (CURB-2)

Cocaine is one of the most commonly abused stimulants globally, and in the US there are signs of a resurgence of cocaine use. A variety of medications have been researched to treat cocaine use disorder (CUD), but as with methamphetamine, none have findings robust enough to warrant FDA approval. This protocol builds on a previous study and aims to evaluate the efficacy of monthly injections of extended release naltrexone and injectable buprenorphine compared to placebo. The UCLA Vine Street Clinic serves as a site for this study which began enrolling in Spring 2023 under the local direction of Dr. Jesse Clark.

ACTION (Analgesic, Anesthetic, & Addiction Clinical Trial Translations, Innovations, Opportunities, & Networks) has a mission to identify, prioritize, coordinate, and sponsor innovative activities that will expedite the identification and development of efficacious and safe analgesic, anesthetic, and addiction therapeutic interventions for the benefit of the public health. Through a collaboration with them, the University of Rochester, Yale and other universities, CBAM is conducting the following study:



### Phenotyping Substance Use Disorder

Currently, standard assessments used for diagnosis and severity of substance use disorder is through clinician-administered, structured interviews which can be costly, require extensive training, and involve lengthy administration times, making them impractical for repeated assessment in clinical trials. The NIDA Phenotyping Assessment Battery (PhAB) was created as a practical toolkit for rapid, low cost, multi-level clinical and behavioral assessment for clinical trials. A recent study demonstrated feasibility of administration of the PhAB in a small, mixed sample of individuals with substance use disorder and healthy controls. This new study will test the PhAB on a larger scale, in order to answer questions about its validity and utility for use in clinical trials.



## Study Results

### Contingency Management for Integrated Harm Reduction Among Men Who Have Sex with Men Who Use Methamphetamine in Los Angeles: A Pilot Assessment.

Dr. Jesse Clark led a pilot study of a contingency management (CM) intervention to reduce methamphetamine (MA) use and improve PrEP/Antiretroviral Therapy (ART) adherence. The study was carried out at the UCLA Vine Street Clinic and enrolled men who have sex with men (MSM) who use methamphetamine who were prescribed a tenofovir-based regimen for either HIV prevention or treatment. While previous studies have focused on CM for either MA abstinence or PrEP/ART adherence, ours was one of the first to examine CM as a strategy to address both factors.

Participants in the study were randomly assigned to receive escalating incentives for either abstinence from methamphetamine use or adherence to their tenofovir and were followed for 4 weeks. Our data showed a trend toward increased medication adherence and methamphetamine abstinence as we hypothesized. The data also showed high rates of study completion and high scores on the study satisfaction surveys administered at the end of the 4-week intervention. These promising results will be used to design a larger study. To read the full article, click [here](#).



## Study Results continued

### Methamphetamine use and adoption of preventive behaviors early in the COVID-19 pandemic among men who have sex with men in Los Angeles, California

The pandemic brought a rise in substance use with use of methamphetamine (MA) most commonly linked to overdoses. CBAM researchers, in collaboration with our colleagues in the UCLA Department of Epidemiology, assessed the relationship between the use of MA and preventive behaviors for COVID-19 by looking at a cross-section of 276 participants from the mSTUDY cohort who completed a remote, on-line survey between April 1, 2020 and September 30, 2020. The mSTUDY is an ongoing cohort study composed of a racially/ethnically diverse sample of MSM, aged 18–45 at enrollment, who live in Los Angeles County, California. Not surprisingly, researchers found that those who reported using MA were significantly less likely to take measures to protect themselves from COVID (social distancing, handwashing, etc.). This demonstrates how chronic use can be utilized as a marker for other health risk behaviors. Understanding the ways in which MA use intersects with psychosocial, behavioral, and biological factors of health is a crucial step toward improving efforts to encourage active involvement in behavioral prevention for future infectious diseases. To read the full article, click [here](#).



## Study Results continued

Naltrexone plus bupropion reduces cigarette smoking in individuals with methamphetamine use disorder: A secondary analysis from the CTN ADAPT-2 trial

Cigarette smoking is the leading cause of preventable death in the US and it disproportionately affects individuals with mental and substance use disorders. Methamphetamine (MA) use in particular, is accompanied by high rates of comorbid tobacco smoking. Previous research has shown that the combination of naltrexone and oral bupropion (NTX-BUP) improves smoking cessation outcomes in non-MA-using populations. The Accelerated Development of Addictive Pharmacotherapy Treatment (aka ADAPT-2) trial was a NIDA Clinical Trials Network study in which CBAM participated. Data from that study proved that NTX-BUP successfully reduced MA use, but researchers looking more closely also found that NTX-BUP was associated with significant reductions in self-reported cigarette smoking for those participants in the trial who smoked. The development of this medication combination as a treatment therapy targeting multiple, co-occurring addictions could have a significant, positive impact on public health. To read the full article, click [here](#).





## CHIPTS Mentored Pilots and Kickstart Awards



The Center for HIV Identification, Prevention, and Treatment Services ([CHIPTS](#)) continued its pilot grant program, funding new and emerging investigators. Successful completion of a pilot study is expected to enhance the investigators' potential to develop into productive, independent research scientists. Two of this year's awardees are mentored by CBAM faculty.

- Identifying Men at Risk of HIV Treatment Interruption due to Mobility, Depression, and Alcohol Use in Malawi (Investigator: Marguerite Thorp, PhD and postdoctoral fellow, Mentor: Steve Shopfaw, PhD)
- Evaluating gender affirming hormone therapy in relation to anxiety and depression symptoms among trans women living with HIV in Lima, Peru (Investigator: Tijana Temelkovska - MD Candidate, Mentors: Jesse Clark, MD and Cherie Blair, MD)

CHIPTS also continued its popular Kick Start program to support the development of new research ideas and other projects to address emerging issues and needs of communities most impacted by HIV. The program has a strong focus on community collaborations and partnerships. This year's projects include

- Addressing access to HIV testing resources in Los Angeles refugee and Indigenous communities
- Supporting the workforce: capacity building and learning exchange for frontline harm reduction workers
- Laying the groundwork to TRUST, providing information about health care and other social services to people engaged in street-based sex work, specifically Black, indigenous, women of color)

## HIV Grand Rounds

CHIPTS also continues to host the UCLA's regular [HIV Grand Rounds](#). In collaboration with the UCLA-Charles Drew University Center for AIDS Research, and the UCLA AIDS Institute the series consists of hour-long lunchtime lectures that are delivered by invited guests or distinguished members of the Institute faculty on a broad range of HIV-related topics with the aim of sharing the latest research findings on HIV prevention, care, and treatment, and highlight important developments in HIV-related research, encouraging scientific collaborations and networking between UCLA investigators and invited speakers, and exciting an interest in HIV/AIDS research for early career investigators, and provide resources about new research findings, funding, and career opportunities

## NIDA Summer Intern

CBAM continues to participate in the National Institute on Drug Abuse Summer Research Internship Program, which supports undergraduate students with a focus on increasing representation of historically underrepresented populations in addiction research. We've been a participant in this program since 2007, mentoring over a dozen students. This year's intern was Khoa Duc Le, a senior at Case Western Reserve University whose goal is to pursue a PhD in Clinical Psychology. Khoa's summer projects included a literature review of the factors leading to medication non-adherence among people with opioid use disorder currently enrolling in medication-assisted treatment, followed by a brief survey exploring the treatment experiences and challenges of people with substance use disorders when seeking and adhering to treatment through a research study.



## T32 Post- Doctoral Training in Global HIV Prevention and Treatment/South American Program in HIV Prevention Research R25

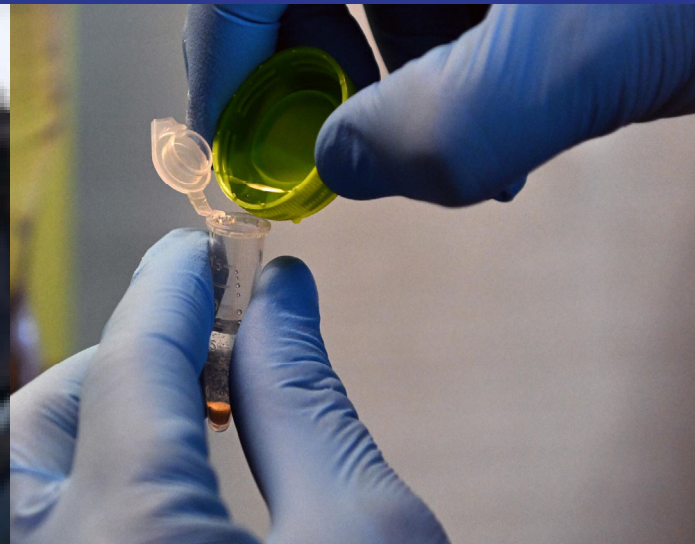
Together with Pamina Gorbach, DrPH, Dr. Jesse Clark received funding to continue an NIMH training grant to support post-doctoral researchers from Medicine, Public Health, and related fields as they establish their independent research careers. As a former member of the training program's inaugural class, Dr. Clark knows well the importance of this program in providing young investigators with the mentorship and support necessary to define their path and secure their future as HIV prevention researchers. The first class of the renewed program includes:

Kathy Li, MD, who will be studying implementation and scale up of peer support strategies to promote HIV and STI testing among MSM in China; and

Marguerite Thorp, MD, MPA, who is continuing her work exploring the impact of mobility and migration on interruption of antiretroviral therapy among women living with HIV in Malawi.

In addition to the T32, Dr. Clark continues to lead the NIMH-funded South American Program in HIV Prevention Research. [SAPHIR](#) provides pre-doctoral researchers from the U.S. with a year-long program of mentored research in Peru or Brazil. Recent SAPHIR Fellows have explored risks for secondary HIV transmission among men living with HIV in Peru, characterized sexual networks of individuals diagnosed with gonorrhea and chlamydia, and assessed risks for congenital HIV transmission among women who acquire HIV during pregnancy in Brazil.





CBAM's mobile clinic was mentioned in two [LA Times articles](#) in January focused on barriers patients face in trying to treat their hepatitis C, despite recent advances in antiviral medication that can cure most cases.

*Photo by Christina House, Los Angeles Times*

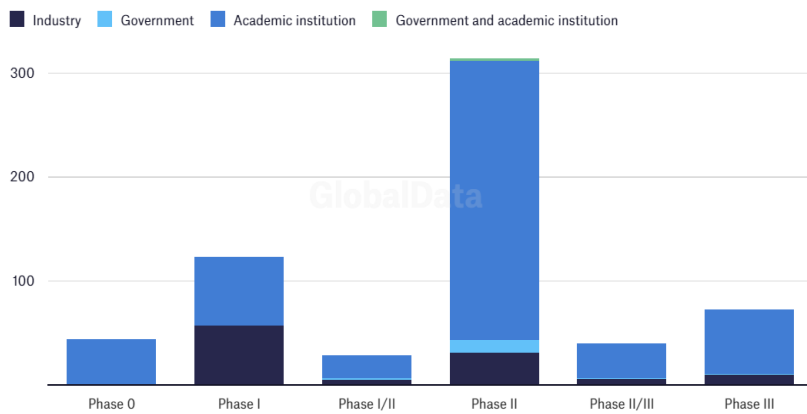
In February, Drs. David Goodman-Meza and Chelsea Shover were quoted in an [article](#) discussing how pharmacies across various northwestern cities in Mexico are selling counterfeit, drug-laced prescription pills. They conducted a separate research study which uncovered similar results.

## CLINICAL TRIALS ARENA

In September, Dr. Steve Shoptaw was quoted in a piece published on the site [Clinical Trials Arena](#) exploring the possible reasons behind the lack of pharma sponsorship in clinical trials investigating new addiction treatments.

## Substance use disorder clinical trials are heavily weighted on academic institutions

Planned or ongoing clinical trials in SUD

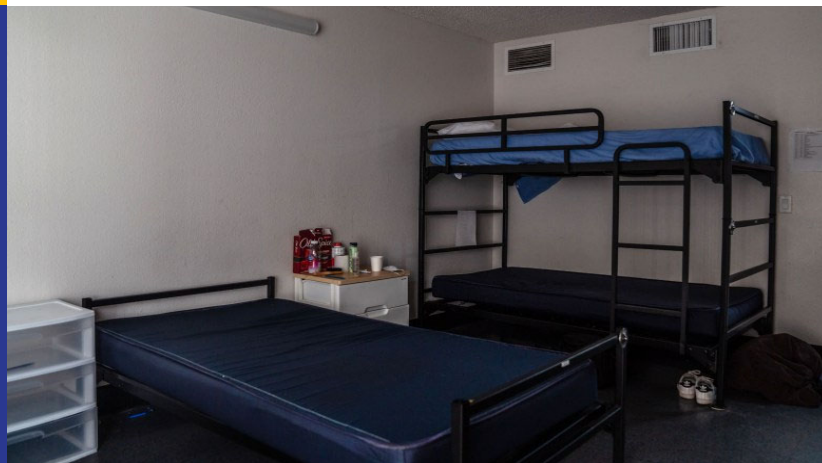


Source: GlobalData • Embed



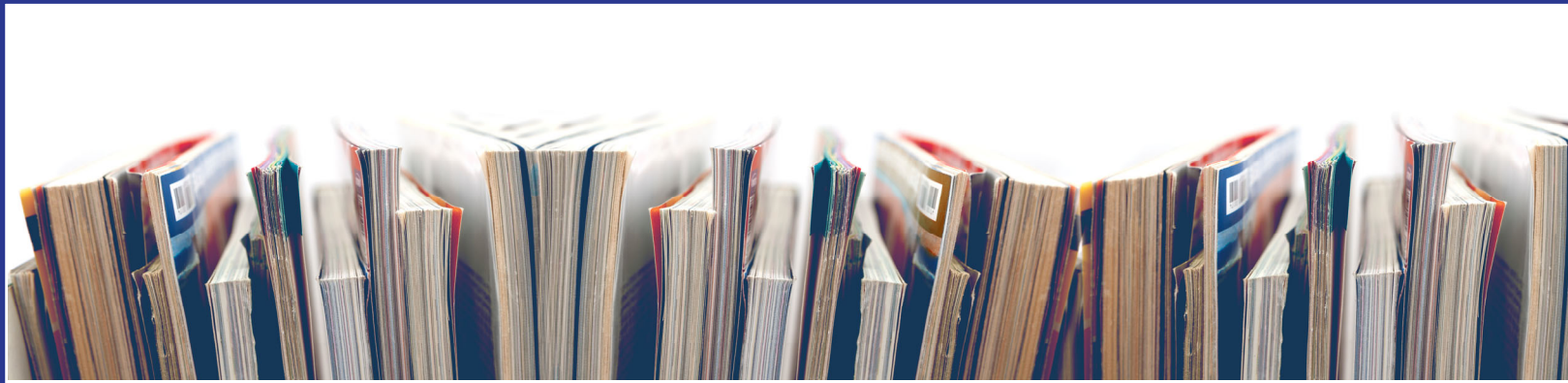
In March, Dr. Shoptaw was quoted in an [article](#) on the difficulties Medi-Cal patients encounter in trying to access San Diego's limited number of withdrawal management (aka: detox) beds.

*Photo by Ariana Drehsler*





# Scientific Publications



As scientists, our biggest impact comes from the knowledge we generate and share. It's that knowledge of what works, what doesn't and why that leads to better policy, better medicine and better lives for those we serve. We published more than 40 peer-reviewed papers this past year. Highlights include:

- Üsküp, D. K., Nieto, O., Rosenberg-Carlson, E., Lee, S. J., Milburn, N. G., & Brooks, R. A. . [Acceptability and Appropriateness of Digital PrEP Interventions for Black and Latina Cisgender Women: Perspectives From Service Providers in Los Angeles County](#). *Journal of acquired immune deficiency syndromes* 2022 Jul 1;90(S1):S134-S140. PMID: PMC9204830
- Li MJ, Richter EI, Okafor CN, Kalmin MM, Dalvie S, Takada S, Gorbach PM, Shoptaw SJ, Cole SW. [Social Genomics of Methamphetamine Use, HIV Viral Load, and Social Adversity](#). *Annals of Behavioral Medicine*. 2022 Aug 30;56(9):900-908. PMID: PMC9424866.
- Fulcher JA, Li F, Tobin NH, Zabih S, Elliott J, Clark JL, D'Aquila R, Mustanski B, Kipke MD, Shoptaw S, Gorbach PM, Al-drovandi GM. [Gut dysbiosis and inflammatory blood markers precede HIV with limited changes after early seroconversion](#). *EBioMedicine*. 2022 Oct;84:104286. PMID: PMC9520213.
- Cohen JM, Li MJ, Javanbakht M, Gorbach PM, Shoptaw SJ. [Methamphetamine use and adoption of preventive behaviors early in the COVID-19 pandemic among men who have sex with men in Los Angeles, California](#). *Drug Alcohol Depend Rep*. 2022 Dec;5:100097. PMID: PMC9519521.
- Dalvie S, Li M, Kalmin M, Cole S, Stein DJ, Shoptaw S. [The association between childhood adversity and the conserved transcriptional response to adversity \(CTRA\) in sexual minority men](#). *Research Square* 2023 Feb 14;rs.3.rs-2585046. PMID: PMC9949175.
- Li MJ, Shoptaw SJ. [Clinical management of psychostimulant withdrawal: review of the evidence](#). *Addiction*. 2023 Apr;118(4):750-762. PMID: PMC10069411.
- Blair CS, Gandhi M, Shoptaw S, Blades C, Clark JL. [Contingency Management for Integrated Harm Reduction Among Men Who Have Sex with Men Who Use Methamphetamine in Los Angeles: A Pilot Assessment](#). *AIDS Behav*. 2023 Jun;27(6):1962-1971. PMID: PMC10152513
- Blair CS, Fulcher J, Cho G, Gorbach PM, Shoptaw S, Clark JL. [Impact of Methamphetamine Use and Rectal STIs on Systemic and Rectal Mucosal Inflammation](#). *JAIDS* 2023 Apr 1;92(4):281-285. PMID: PMC9974870
- Clark JL, Oldenburg CE, Passaro RC, Segura ER, Godwin W, Fulcher JA, Cabello R. [Changes in Inflammatory Cytokine Levels in Rectal Mucosa Associated with Neisseria Gonorrhoeae and/or Chlamydia trachomatis Infection and Treatment Among Men Who Have Sex with Men in Lima, Peru](#). *Journal of Infectious Diseases*. 2023 Aug 16;jiad349. PMID: 37584273.

Visit our [website](#) to learn more and to read additional articles published by our faculty.



## Our Team



The UCLA Vine Street Clinic and Mobile Unit Open House welcomed research participants, community partners, and academic colleagues who toured the site and learned more about our current and upcoming studies. We also created a brief virtual tour for those unable to attend in person. It is now posted on our [website](#). (Left)



Our CHIPTS and UCLA Vine Street Clinic staff participated in the World AIDS Day event at Charles R. Drew University of Medicine and Science. (Left)

Meanwhile, our mobile unit team joined colleagues and fellow advocates for the Overdose Awareness Day 2022 rally in front of L.A. City Hall. (Right)







**CENTER FOR BEHAVIORAL & ADDICTION MEDICINE**  
**Financial Statement for Fiscal Year 2022/2023**  
*(July 1, 2022 through June 30, 2023)*

	<u>Permanently</u>	<u>Temporarily</u>			
	<u>Restricted</u>	<u>Restricted</u>	<u>Unrestricted</u>	<u>Total</u>	<u>FY 2021/2022</u>
<b>INCOME</b>					
Federal Contracts & Grants	\$ 9,392,610	\$ 191,008	\$ -	\$ 9,583,618	\$ 9,271,154
State/Local Contracts & Grants	\$ 297,535	\$ -	\$ -	\$ 297,535	\$ 109,611
Subcontracts	\$ 167,516	\$ -	\$ -	\$ 167,516	\$ 986,109
Corporations/Industry	\$ -	\$ 557,082	\$ -	\$ 557,082	\$ -
Foundations	\$ -	\$ -	\$ -	\$ -	\$ -
Individuals	\$ -	\$ -	\$ -	\$ -	\$ 20,497
UC Funds	\$ -	\$ 115,255	\$ 92,107	\$ 207,362	\$ 216,370
Clinical Services Income	\$ -	\$ -	\$ 118,212	\$ 118,212	\$ 245,044
<b>TOTAL INCOME</b>	<b>\$ 9,857,661</b>	<b>\$ 863,345</b>	<b>\$ 210,319</b>	<b>\$ 10,931,326</b>	<b>\$ 10,848,785</b>
<b>EXPENSES</b>					
Academic Salaries				\$ 659,623	\$ 634,867
Staff Salaries				\$ 2,776,645	\$ 2,320,327
Fringe Benefits				\$ 1,345,977	\$ 1,159,794
Stipends - Postdoctoral Fellows				\$ -	\$ -
Stipends - Interns				\$ -	\$ 2,400
Consultants/Guest Lecturers				\$ 153,611	\$ 132,111
Employee Training/Certifications/Licenses/Memberships				\$ 2,881	\$ 3,794
Subawards				\$ 698,535	\$ 299,706
Funds Transferred to Other Departments (Direct)				\$ 1,517,421	\$ 1,191,270
Space Rental				\$ 188,916	\$ 176,661
Alterations/Renovations				\$ 7,994	\$ -
Communications				\$ 60,291	\$ 57,180
Clinic Operations				\$ 79,268	\$ 64,681
Vehicle Operating Costs				\$ 60,209	\$ 56,875
General Supplies & Equipment				\$ 1,335	\$ 10,698
Computers, Software & Computer Supplies				\$ 24,370	\$ 33,460
Medical Supplies				\$ 32,421	\$ 31,020
Project-Related Supplies				\$ 97,715	\$ 56,442
Travel and Events				\$ 73,027	\$ 55,250
Postage/Courier				\$ 52,283	\$ 35,592
Print, Copy & Media Services				\$ 4,880	\$ 13,801
Publication Fees				\$ 1,637	\$ -
Transcription Services				\$ 16,918	\$ 6,814
Recruitment Ads				\$ 58,641	\$ 37,769
Lab Services				\$ 81,657	\$ 100,650
Pharmacy				\$ 25,416	\$ 40,991
Inpatient Care				\$ 147,766	\$ 159,465
Participant Incentives				\$ 172,786	\$ 214,424
Website Services				\$ 5,785	\$ 2,854
Miscellaneous				\$ 25,191	\$ 14,404
Indirect Charges				\$ 2,001,156	\$ 1,747,887
<b>TOTAL EXPENSES</b>				<b>\$ 10,374,355</b>	<b>\$ 8,661,185</b>
<b>NET INCOME (LOSS) YTD*</b>				<b>\$ 556,971</b>	<b>\$ 2,187,600</b>

*This document was generated internally. It is not an audited financial statement.*

*\*The net balance is primarily restricted project funding that will carryover into the next fiscal year.*



## About CBAM

CBAM is a multidisciplinary center that seeks to advance the prevention and treatment of chronic illness, especially in communities with health disparities.

CBAM works at the intersection of academia and community with a focus on treating addiction and preventing the spread of HIV. We are housed in the UCLA Department of Family Medicine. Our faculty include:



**Steven Shoptaw, PhD**

Executive Director, UCLA Center for Behavioral & Addiction Medicine  
PI/Director, UCLA Center for HIV Identification, Prevention & Treatment Services  
Professor and Vice Chair of Research, UCLA Department of Family Medicine  
Professor, Department of Psychiatry and Biobehavioral Sciences  
Honorary Professor, University of Cape Town Department of Psychiatry and Mental Health



**Jesse Clark, MD, MSc**

Associate Professor in Residence, UCLA Department of Medicine, Division of Infectious Disease  
Associate Professor in Residence, UCLA Department of Family Medicine  
Medical Director, UCLA Vine Street Clinic  
Director, South American Program in HIV Prevention Research (SAPHIR)



**Oladunni Adeyiga, MD**

Assistant Clinical Professor, UCLA Department of Medicine, Division of Infectious Disease



**Cherie Blair, MD**

Assistant Clinical Professor, UCLA Department of Medicine, Division of Infectious Disease



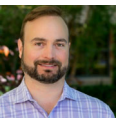
**Ron Brooks, PhD**

Assistant Professor, UCLA Department of Family Medicine



**David Goodman-Meza, MD, MAS**

Assistant Clinical Professor, UCLA Department of Medicine, Division of Infectious Disease



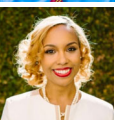
**Timothy Hall, MD, PhD, FAPA FASAM**

Assistant Clinical Professor, UCLA Department of Family Medicine



**Michael Li, PhD**

Assistant Professor, UCLA Department of Family Medicine



**Dilara Uskup, PhD**

Assistant Professor, UCLA Department of Family Medicine



## Show your support!

To help support this life-changing work, visit us at <http://www.uclacbam.org/about-us/donate/> or call (310) 794-0645 to speak with our Administrative Director. More than 90% of every donation goes directly to serve our mission and all donations are tax deductible. Naming opportunities are available!



## Contact Us!

UCLA Center for Behavioral &  
Addiction Medicine  
10880 Wilshire Blvd., Ste. 1800  
Los Angeles, CA 90024  
(310) 794-0619  
[cbam@mednet.ucla.edu](mailto:cbam@mednet.ucla.edu)  
[cbam.ucla.edu](http://cbam.ucla.edu)